

# "Everlong" by Foo Fighters

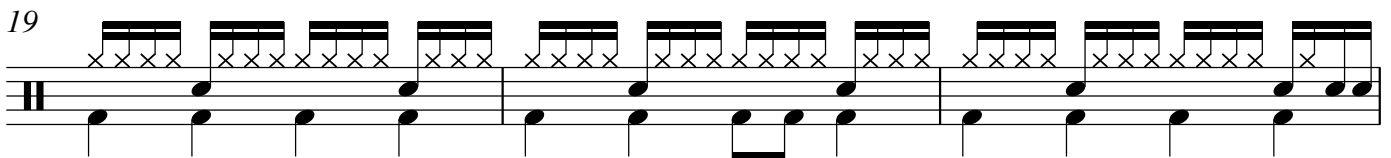
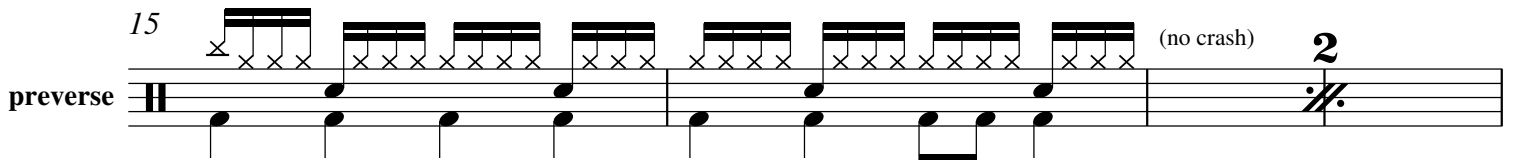
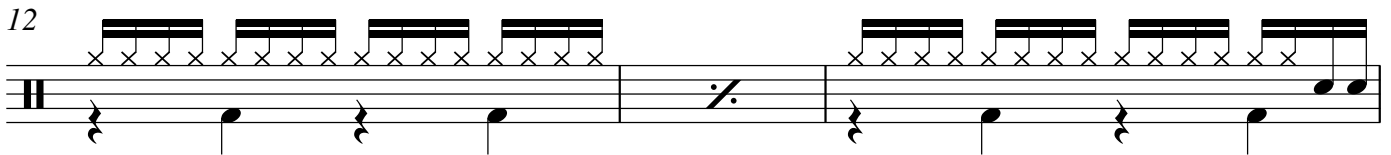
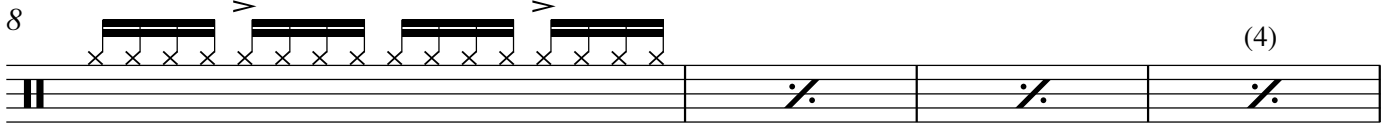
## EXAMPLE PREVIEW

Transcribed by  
Nate Brown

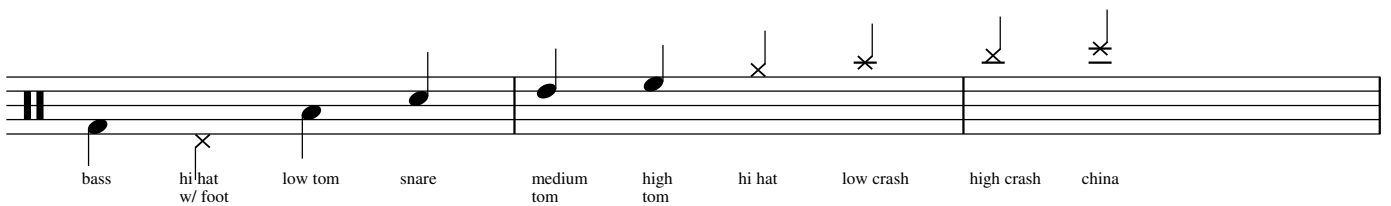
♩ = 158 bpm

7

Drum Set



## Drum Notation Key



### Other Markings

ch. - choke: hit the cymbal and then grab it to mute the sound

loose hh - lift up on the hi hat pedal slightly to make a loose sound when hit w/ stick